

# BPSI COLLECTIONS

## Evaluating and Improving the Impact of the School's Work

### Evaluating and Improving the Impact of the School's Work

#### BENEFITS TO THE SCHOOL

The school will benefit from:

- Regular challenge and support from a consultant with proven experience in successful leadership.
- Accurate external evaluation of the schools strengths and areas for development.
- Validation of the school's judgements against the Ofsted Framework
- Support for the headteacher to prioritise areas for improvement
- Challenge the leadership team on progress towards improving standards and support the school with addressing weaknesses.

#### SERVICE PROVIDED

The standard programme will consist of three school improvement visits as well as an optional visit to advise the governors on headteacher performance management. The BPSI will provide a report after each visit. A suggested programme is outlined below but the headteacher can adapt the programme to suit their needs:

- Visit 1 (autumn term): eg. a review of outcomes and standards and establishing priorities for the

year.

- External support for governors for Headteacher Performance Management (optional)
- Visit 2 (Spring term) : eg. a focus on teaching, learning and assessment and pupils attitudes (including the leadership of these areas)
- Visit 3 (Summer term): eg. a focus on leadership and management (including leadership at all levels and governors) and evaluation of progress in school improvement.
- The adviser will write a report for school leaders following each visit.

#### CONSULTANT(S)

Helen Morrison

#### PRICES

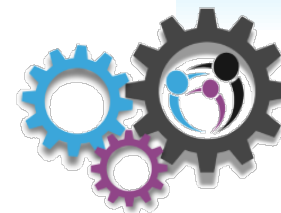
- **BPSI Schools**  
Standard programme – 13 BPSI hours (including prep time)
- **Non BPSI Schools**  
Contact BPSI Support Team

*This is an approximate guide to the BPSI hours needed but is flexible and dependent on the school's needs.*

#### CONTACT

For further information, please contact the BPSI Support Team on 020 8359 6325

[BELS.training@barnet.gov.uk](mailto:BELS.training@barnet.gov.uk)



# BPSI

Barnet Partnership for  
School Improvement