

# BPSI COLLECTIONS

## Nurseries in Schools – Showing Ofsted Your Best

**This collection focuses on how to show your best practice to Ofsted rather than changing your practice for Ofsted's sake!**

This collection is to support headteachers and EYFS leaders at improving, evaluating, monitoring and celebrating all that is excellent EYFS practice. It is intended to enable schools to be confident when they receive the Ofsted call that they are ready to demonstrate the quality of their Nursery to the same high standard as the rest of the school.

### **BENEFITS TO THE SCHOOL**

The school will benefit from:

- Support and challenge from a very experienced EYFS consultant who has led many schools through Ofsted.
- An understanding of how to evaluate your school's provision through analysing how the school's data outcomes and quality of provision fit together
- Having an effective and well established monitoring cycle which facilitates progress and ensures quality
- Having a clear understanding of what high quality EYFS looks like and being confident that the school is working to provide it

The collection offers:

- Supported observations to help identify the quality of the provision – both high quality adult interactions and a challenging learning environment
- Data analysis and creation of a succinct data report which can be easily updated as new data becomes available
- Action planning from the data
- An analysis of the school's improvement plan for EYFS and a reflection in its impact
- Preparation for the EYFS leader for the Ofsted interview
- An evaluation of how EYPP is being used and its impact on children's outcomes
- A review of the support offered to EYFS families as part of the statutory duties

### **CONSULTANT(S)**

Helen Cheung/Ceri Gillo

### **PRICES**

#### **BPSI Schools**

- Bespoke consultancy – please discuss with Helen or Ceri

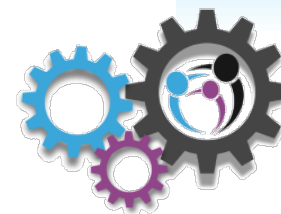
#### **Non BPSI Schools**

- Contact BPSI Support Team

### **CONTACT**

For further information, please contact the BPSI Support Team on 020 8359 6325

[BELS.Training@barnet.gov.uk](mailto:BELS.Training@barnet.gov.uk)



# **BPSI**

Barnet Partnership for  
School Improvement